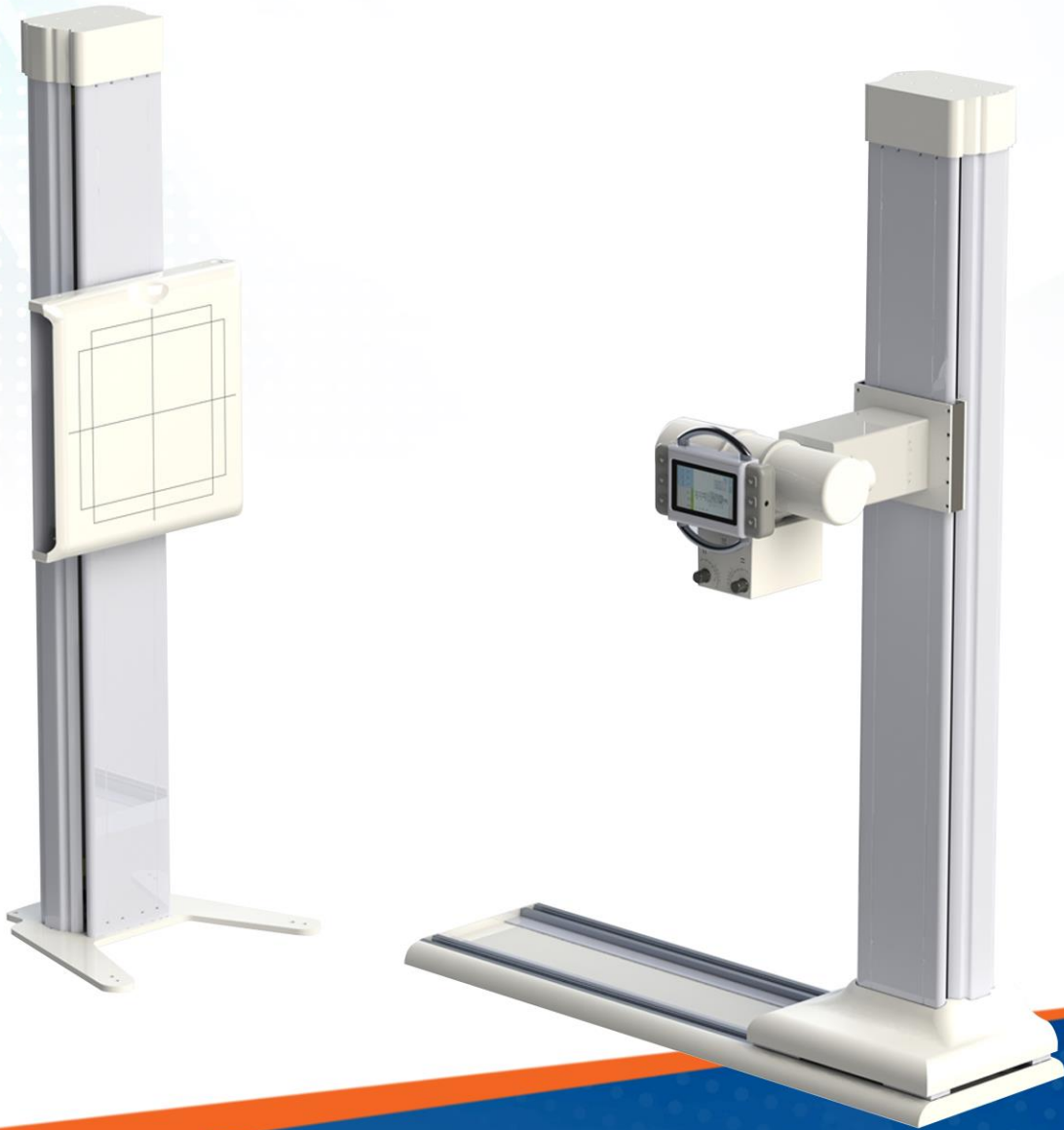




MASTERAD™ MX30 FULL MANUAL SYSTEM

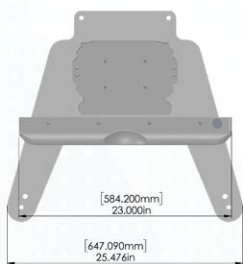


WWW.MEDICATECHUSA.COM

MASTERAD™ MX30

COMPONENTS, SPECS AND OPTIONAL UPGRADES

- ✓ Tube and chest Stand are light weight and come with an Anodized aluminum finish
- ✓ Electromagnetic brakes throughout the system.
- ✓ Digital display control system with 7" touch screen
- ✓ Digital measurement of side and tube rotation angle.



▶ Floor Mount

Floor mount, non-rotating tube stand and chest stand for chiro 5' long floor mount with 40" Longitudinal travel

▶ Tube Stand

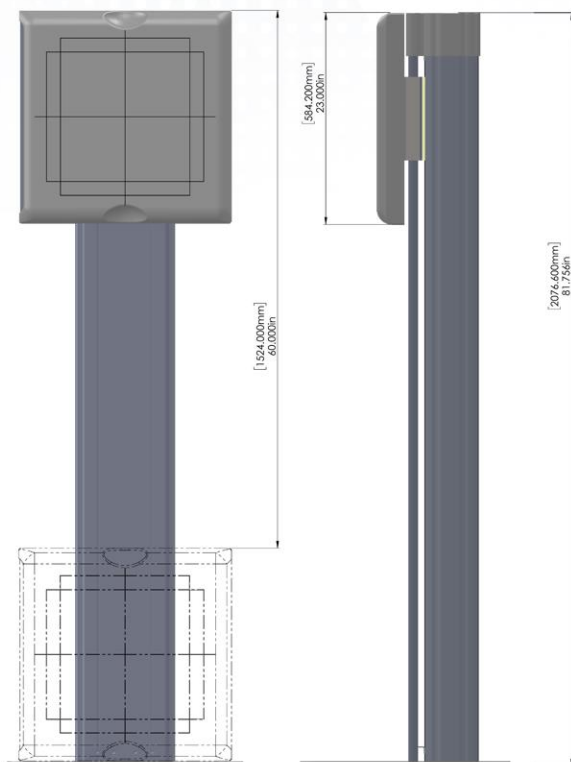
- 83" Non- rotating tube stand on the floor mount
- 11" – 73" vertical travel
- Electric lock for tube angulations – 90 deg
- Electromagnetic brakes for longitudinal and vertical travel
- 21.5 tube arm (focal point to front of column 17")

▶ Chest Stand

- 83" chest stand with grid cabinet
- 11" – 73" vertical travel
- Grid cabinet with heavy duty tray
- 10 : 1, 103 line grid or as specified
- Electromagnetic break for vertical travel
- Electric control for min and max vertical travel

▶ Grid

X-Ray Grid Aluminum



▶ Generators

- 32KW Generator,
- 125KV, 1 tube, 1 filament P/S, Three phase
- LSS (low speed starter), Membrane console
- APRs (Anatomical Programs),
- GenWare Utility Software

▶ Cables

20' high voltage cable pair with federal terminals on both ends (Pair)

▶ Accessories

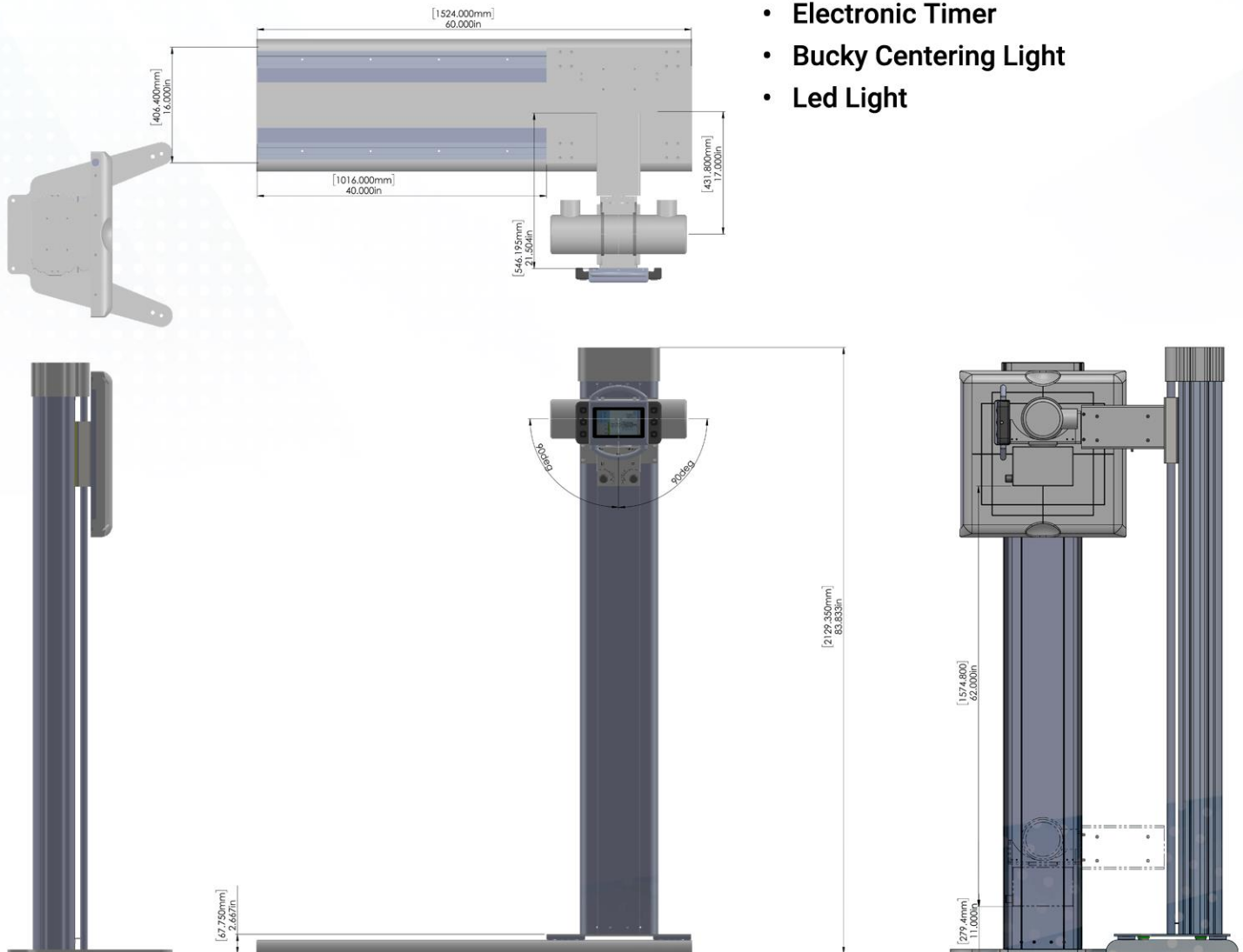
Hand switch ready / expose hand switch

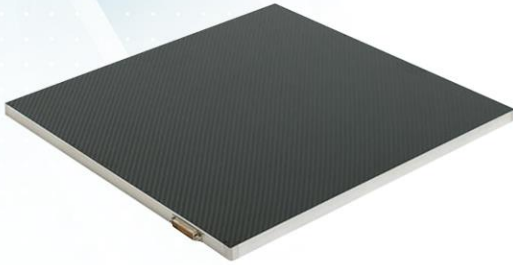
▶ Xray Tube 140KHU

- (1) Max. exposure voltage 125 kV
- (2) Focal Spot 0.6 /1.2 or smaller
- (3) Output Power 40KW or higher

▶ Cable for the e7239FX Tube Collimator

- Certified Manual Collimator
- Electronic Timer
- Bucky Centering Light
- Led Light





► DR Panel

MasterX 17x17 " Csl Tethered, cassette size DR flat panel detector for chiro use

► Voyance Acquisition & Processing Software

- Superior Image Quality
- All Body parts With All Required Techniques
- Exam-specific algorithms image processing
- Automatic image optimization
- Edit existing patient information/search patient by patient name, patient ID, • Accession number
- True size for printing
- Resend / Reprint image
- Send/Print queue management
- User-friendly touch GUI
- Fully DICOM 3.0 Compatible: MWL, Send, Print, MPPS, etc.
- Customized functions and various themes
- Emergency Mode Accessible at All Times with Single Click.
- Support Continuous Exposures.
- Edit Existing Patient Information/Search Patient by Name, ID, Accession Number .
- Side By Side Image Comparison.
- Dicom Send , E-mail or Burn Images Over CD/DVD
- Support Multi Format Image Export, Auto Cropping, Auto Grid Suppression, Auto Labeling, Auto Rotation, Free Rotation, Multi Layout, etc.
- Move and Copy Images between Studies.
- Supporting Up to 4 Digital Detectors Including One Digital Dental Sensor.



▶ **Options For Voyance Software**

Add-On Medical Advanced Chiro Tools

▶ **PACS**

Voyance VPACS Software with up to 10 viewers licenses included

▶ **Work Station**

Acquisition Workstation (Dell PC i5 , 8GB Ram , 1 TB HDD)

▶ **Warranty**

Five Years Hardware Warranty (1st year includes labor and shipping)

▶ **Free Remote Support for One (1) Year and for One (1) X-ray Panel System**

- Unlimited Phone Support
- Remote Access Troubleshooting
- Latest Software Upgrades
- Remote DR Panel Calibration
- Remote System Monitoring & Tune-up

▶ **Optional Upgrades**

- Upgrade to 40K Generator
- Upgrade to 200Khu Tube
- Upgrade to tube stand with 14" arm. This is a free option.
- Upgrade to Generator Integration with Software. Everything that can be done with the software including the adjustment of ma, ms, MaS, kvp, and small or large focal points.

▶ **Monitor**

Dell 23" Monitor LCD

▶ **Support/Service**

Free Training



50 MAXWELL IRVINE, CA 92618 USA



800.817.5030



WWW.MEDICATECHUSA.COM